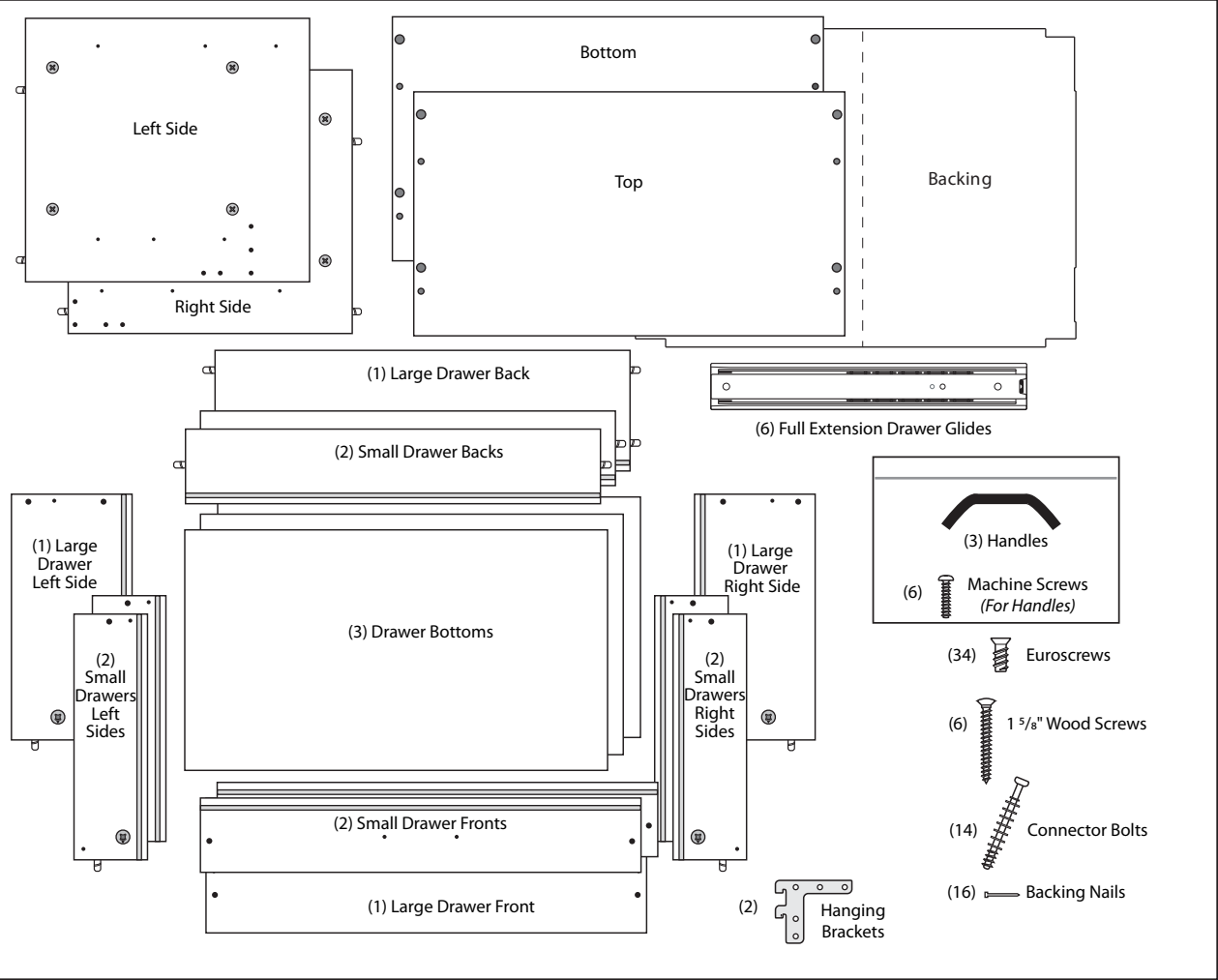
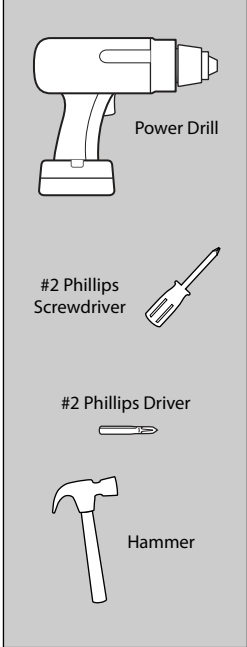


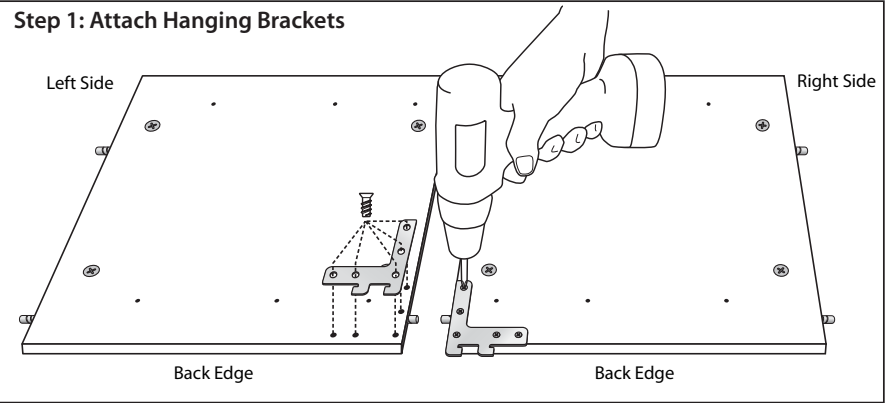
Contents of Package



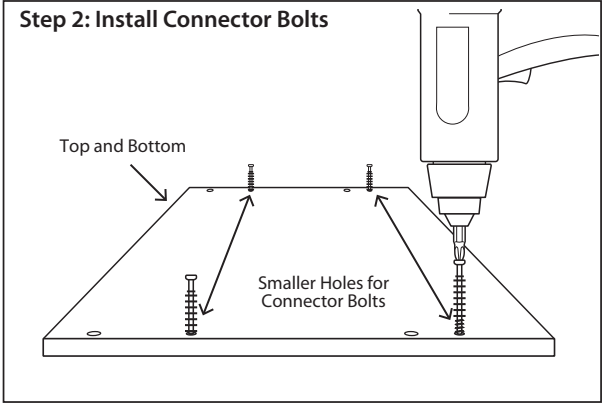
Tools Required



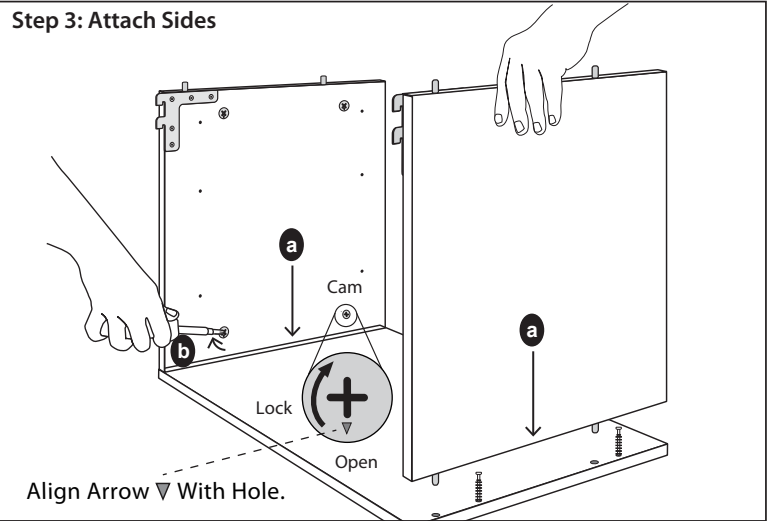
Assembling the 3 Drawer GOBox



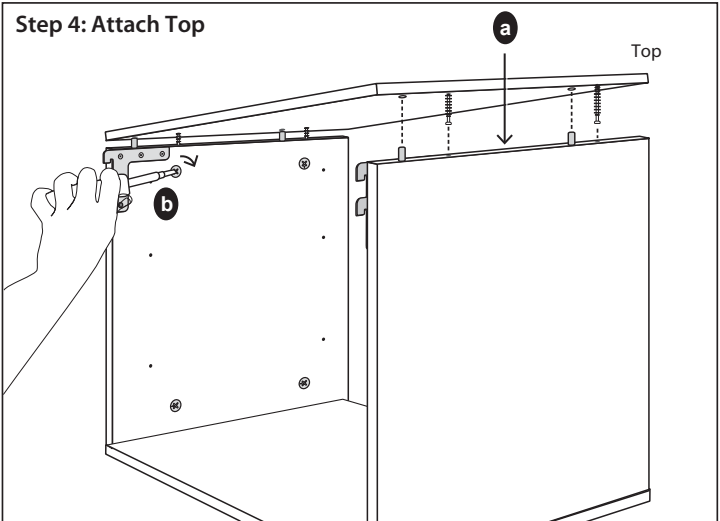
Attach Hanging Brackets to Sides using EuroScrews. (If using power drill, set torque to low setting.)



Install (4) Connector Bolts into small holes on Top and Bottom Panels.



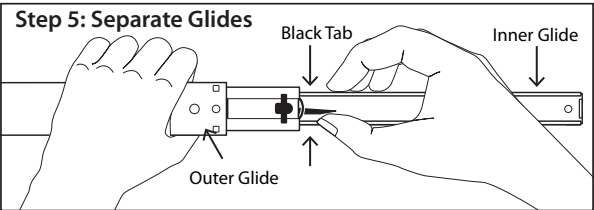
(a) Attach Sides to Bottom. (b) Tighten Cams by turning clockwise until snug.



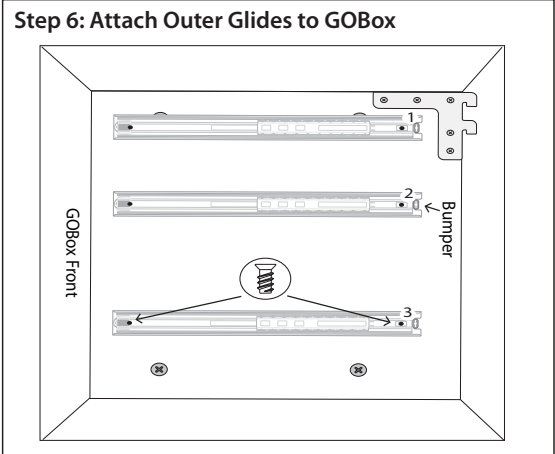
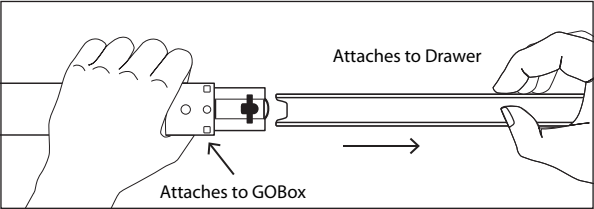
(a) Attach Top. (b) Tighten Cams by turning clockwise until snug.

Proper Care for an OBox: Use Goo Gone™ or Simple Green® with a rag or putty knife to remove any excess glue or marring that was caused by shipping or assembly.

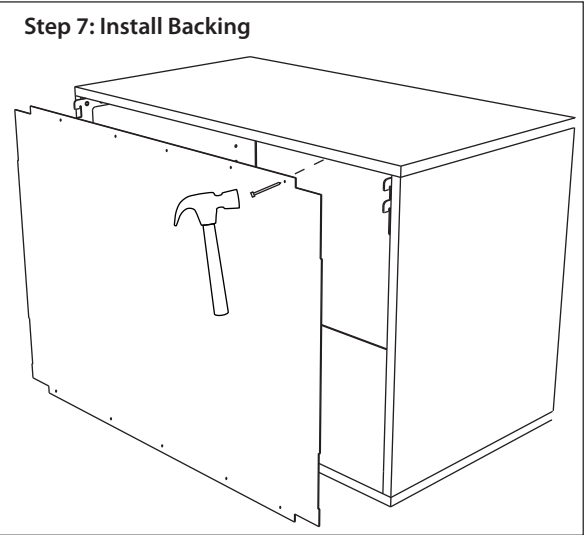
Installing Glides



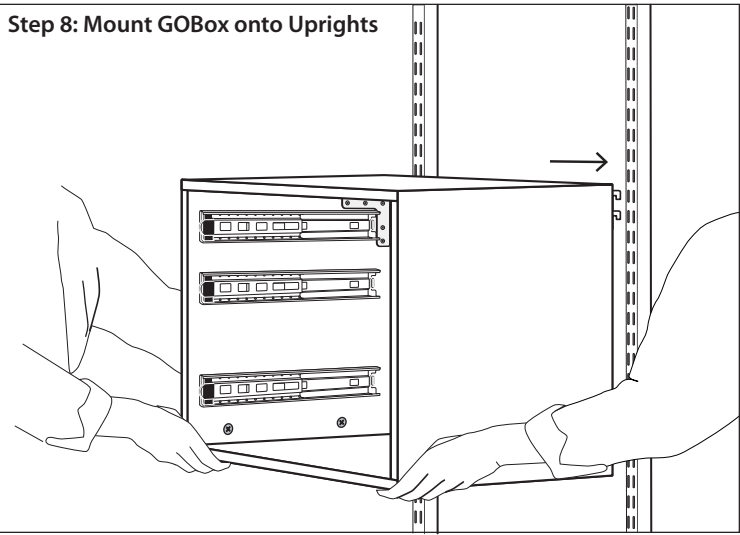
(a) Pull out Inner Glide to expose Black Tab.



Turn GOBox on its side. Attach Outer Glides with Euroscrews. Install Outer Glides in holes 1, 2, and 3. Repeat for other sides.

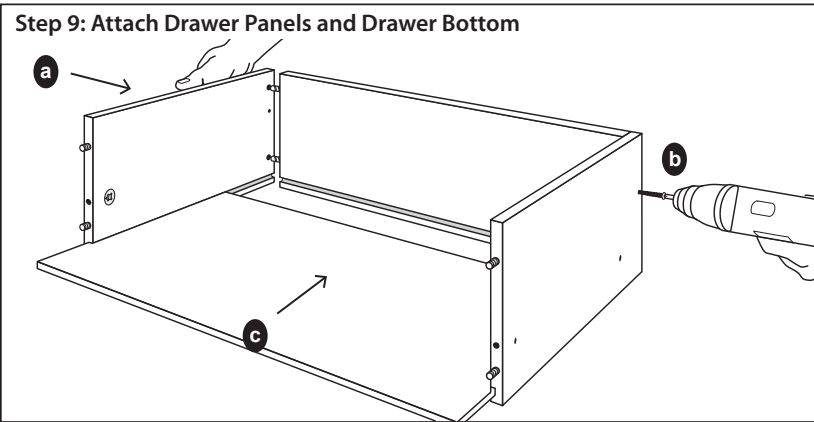


Install Backing with Nails provided into Top and Bottom Panels only.

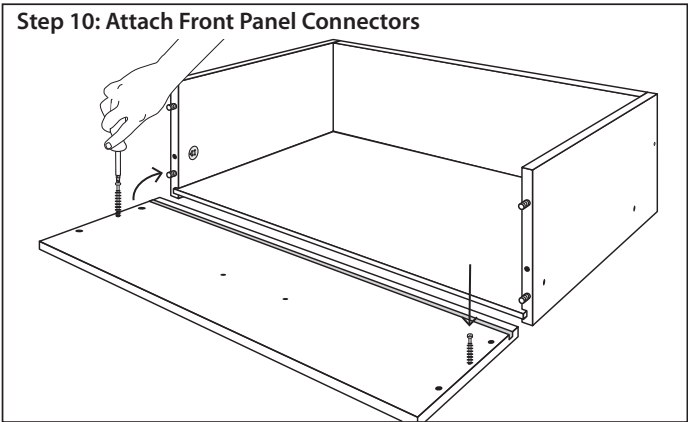


Mount GOBox onto Uprights by inserting Hanging Brackets into the innermost track of each Upright. Two people recommended for installation.

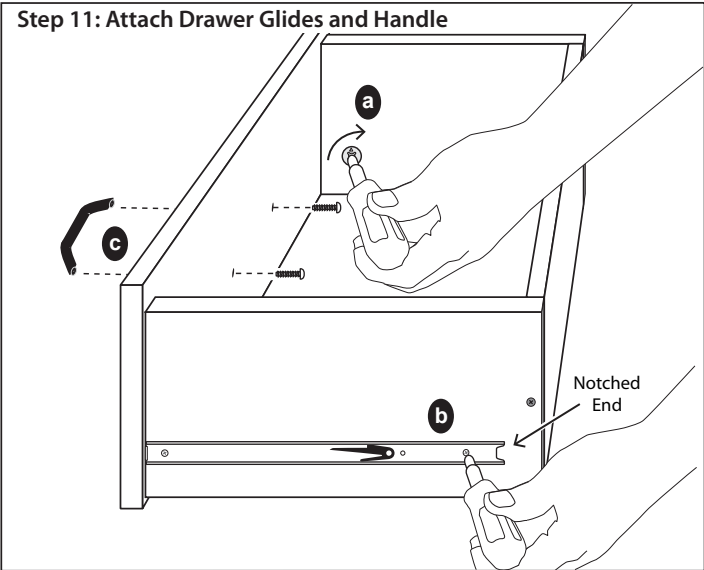
Assembling/Inserting Drawers



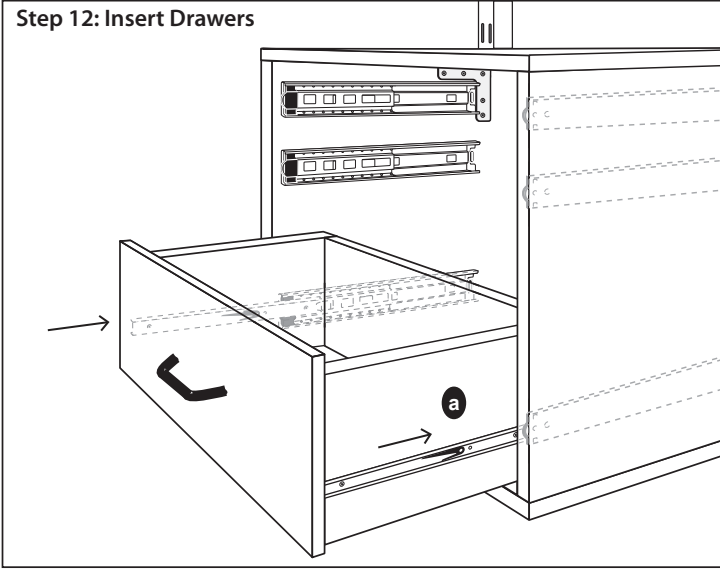
(a) Attach Sides to Back. (b) Secure with 1 5/8" Wood Screws. (c) Slide in Bottom.



Screw in Connector Bolts and attach Front.



(a) Lock cam by turning clockwise 1/4 turn. Turn until snug.
(b) Attach Inner Glides to Drawer with Euroscrews. Notched End should be at back.
(c) Attach Handle with Machine Screws.



(a) Position Drawer on Glides and push in Drawer completely. Repeat Steps 9, 10, 11, and 12 for two Small Drawers. NOTE: To remove Drawers, push the Black Tab while pulling out the Drawer.